

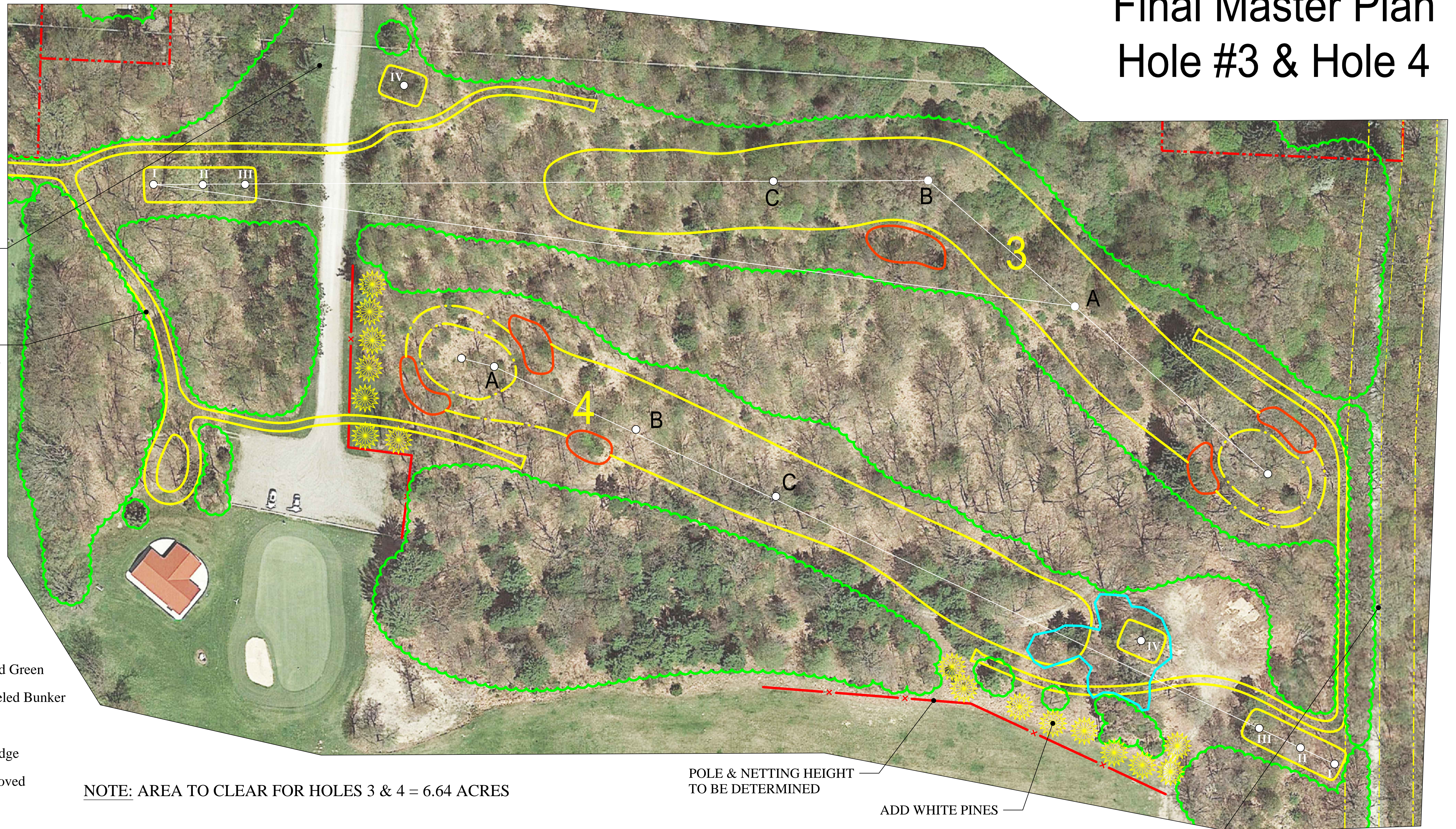


White Lake Golf Club  
 "Established 1916"  
 6777 S. Shore St.  
 Whitehall, MI 49461

BACK TEE MUST HAVE  
 GOOD TRIANGLE OF  
 VISION OF THE ROAD.

CONSTRUCT THE LAST  
 PORTION OF THE GRAVEL  
 CART PATH FROM THE  
 FUTURE SOUTHERN  
 CLUBHOUSE.

# Final Master Plan Hole #3 & Hole 4



### KEY

- New or Restored Green
- New or Remodeled Bunker
- New Cart Path
- New Fairway Edge
- Trees to be removed

NOTE: AREA TO CLEAR FOR HOLES 3 & 4 = 6.64 ACRES

POLE & NETTING HEIGHT  
 TO BE DETERMINED

ADD WHITE PINES

CLUB TO VERIFY &  
 STAKE ROAD R.O.W.

### SCORECARD

### SHOT MATRIX

### SCORECARD

### SHOT MATRIX

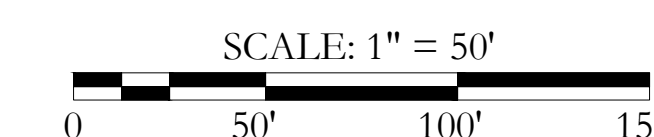
	I	II	III	IV	PAR
PROPOSED: HOLE 3	395	379	366	323	4

	I	II	III	IV
A:	300	284	271	228
B:	250	234	221	178
C:	200	184	171	128

	I	II	III	IV	PAR
PROPOSED HOLE 4	312	300	286	234	4

	I	II	III	IV
A:	300	288	274	222
B:	250	238	224	172
C:	200	188	174	122

March 1, 2021



**Raymond Hearn**  
 Golf Course Designs, Inc.

119 West 37th Street  
 Holland, Michigan 49423 USA

(O) 616-399-7686  
 (M) 616-403-6181

www.rhgd.com  
 ray@rhgd.com